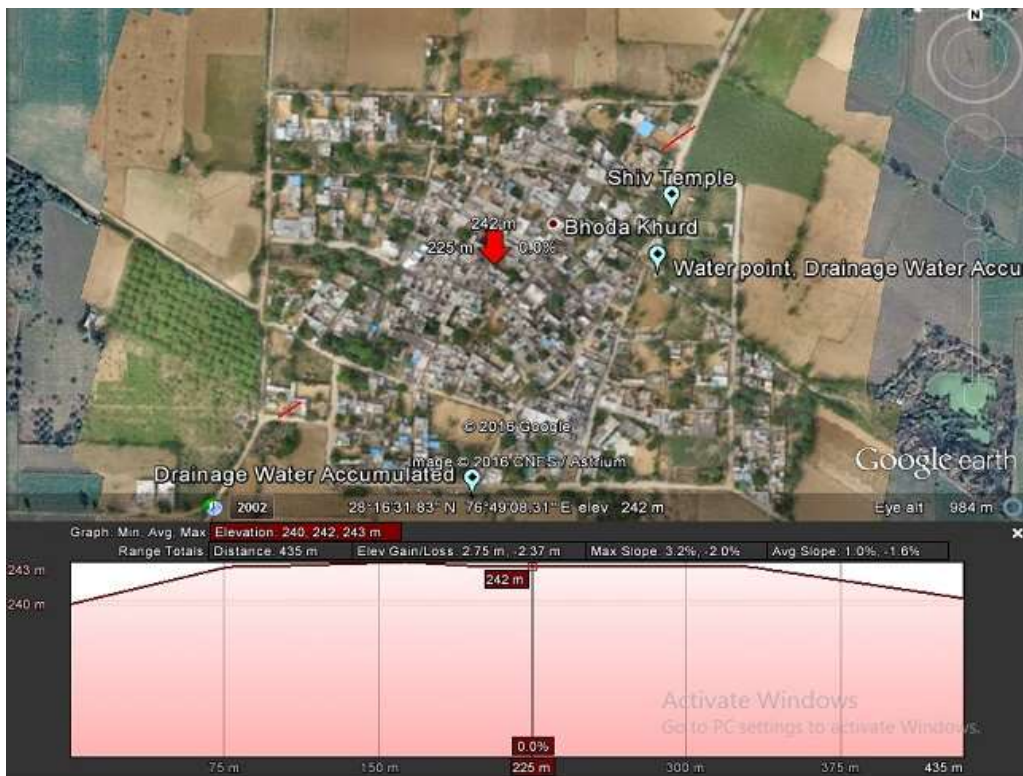


Hi,
Thank you for your time.
Here's a glimpse into what we have been upto. Please do share your insights
Best wishes
Purna





Snapshots From Our Drone Pilot

This screenshot is a geo-referenced map overlaid on Google Earth Pro, prepared through arial images clicked by drones & geo-tagged by our data collectors. While the images show different sites of water accumulation, the elevation profile provides evidence for the same - indicating drainage issues faced by the community. [Click here](#) to catch a glimpse of the pilot.

All necessary permissions from relevant authorities have been obtained



Outline India at [Global Citizen Year - India Chapter](#)

Mahima Taneja, Research Associate with Outline India visited the Barefoot College in Tilonia - near Ajmer, Rajasthan and participated in workshops on notebook making and

solar energy by the local community.



['Policy making in the grey zone'](#) - In this article featured in *Ideas for India*, Prerna discusses the impact of the recent currency ban by the Government of India, on our field work



[Work With Us - Outline](#) India is looking for people who are interested in working with a growing social enterprise and is keen on contributing to its growth.



['India needs to accelerate role of Big Data in social innovation'](#) - We are thankful to **Mr. Rana Kapoor, MD & CEO, YES Bank**, for mentioning *Outline India* as a force to reckon with in this article in *Economic Times*

